

The logo for Skolinux features the word "Skolinux" in a white, sans-serif font. The letter "o" is replaced by a red circular swirl. The text is set against a blue, hand-painted style background that resembles a brushstroke.

Skolinux

aka Debian Edu

How it's used worldwide

The logo for Skolinux features the word "Skolinux" in a white, sans-serif font. The letter "o" is replaced by a red circular swirl. The text is set against a blue, hand-painted style background that resembles a splash or a brushstroke.

Skolinux

aka Debian Edu

***How it's used worldwide,
Lenny & how you can help***

About the two names...

- nowadays Debian Edu and Skolelinux are used as synonyms – it's the same project
- Skolelinux was started in 2001 in Norway, Debian Edu at around the same time in France
 - skole is Norwegian and means school
 - edu is short for education
- I tend to say that
 - Debian Edu is name of the project
 - Skolelinux is the name of the distribution



Outline

- Some bits about me
- Project goals, design & features
- Debian Edu Etch
- Debian and Debian Edu
- Debian Edu Lenny
- How you can help
 - Testing & developing
 - Documentation & translations



Some Debian bits about me

- running Debian stable as primary OS since 1996
- contributing since 2003
- Debian Developer, holger@debian.org since 2007
 - Debian Edu developer, mostly documentation and release-manager, ftpmaster
 - FAI (fully automatic installation) developer
 - Debian-QA / piuparts.debian.org
 - founded debian-community.org
- DebConf organizer since 2005
 - founded the DebConf video-team in 2005



Some Debian bits about you :-)

- Who is running/using Debian?



Some Debian bits about you :-)

- Who is running/using Debian?
- Who is running/using Debian Edu?



Some Debian bits about you :-)

- Who is running/using Debian?
- Who is running/using Debian Edu?
- Who would like to run/deploy Debian Edu?



Debian Edu project goals

- The original idea: provide a software distribution with a complete IT platform for primary schools.
- practical goals:
 - reduce the computer-related expences in schools
 - give schools a well-tested collection of services which reduce system administration needs
 - increase computer availability



Project goals continued

- ethical goals:
 - teach kids that sharing software can be legal and good
 - teach kids how to tinker and improve the software they use
 - demonstrate the quality of free software
 - provide programs in (all) native languages



School specific needs

- low maintenance, out-of-the-box setup
- little resources
- localisation – very important in schools
- learning to express, share & learn
- tools for making music, drawings & learning
- source code availability – to be able to understand what's going on and change it
- different tools for different kind of pupils
- office, java, flash & multimedia support



School specific needs

- low maintenance, out-of-the-box setup
- little resources
- localisation – very important in schools
- learning to express, share & learn
- tools for making music, drawings & learning
- source code availability – to be able to understand what's going on and change it
- different tools for different kind of pupils
- office, java, flash & multimedia support

-> not so very school specific at all! :-)



Debian Edu in use worldwide



<http://wiki.debian.org/DebianEdu/Documentation/Lenny/Contribute>



Debian Edu in use worldwide

- all schools in Extremadura / Spain
- many many schools in Norway and Germany
 - Rheinland Pfalz (2008: 11 schools, 2009: 34)
 - Hamburg?! (50 servers?!)
- many schools throughout the world (France, Spain, Japan, Brasil, Argentina, Danmark, lots of others)
- New initiatives in Taiwan, San Salvador and Nicaragua
- also used in universities and offices worldwide



Debian Edu in use in Extremadura

- A short clip which was shown in EuroNEWS (a commercial cable TV station) and which is available in several european languages





Debian Edu in use in Extremadura, Spain

- IIRC: 2000 servers
- IIRC: ~100000 clients
- IIRC: A desktop on every pupils desk from secondary school, one per every two people in primary school
- Deployed Lenny based Debian Edu in summer / autumn 2008(!)
- GNOME and some other minor diffs to (what was previously) a “standard Debian Edu setup”



Debian Edu in use in Rheinland-Pfalz, Germany

- 2008: 11 schools
- 2009: 34 schools
- Support certification, 2 days of training, 1 day exam
- Main server: etch, cipux (webadmin), moodle
- Workstations / Thinclients: lenny + KDE4, italc, Wine

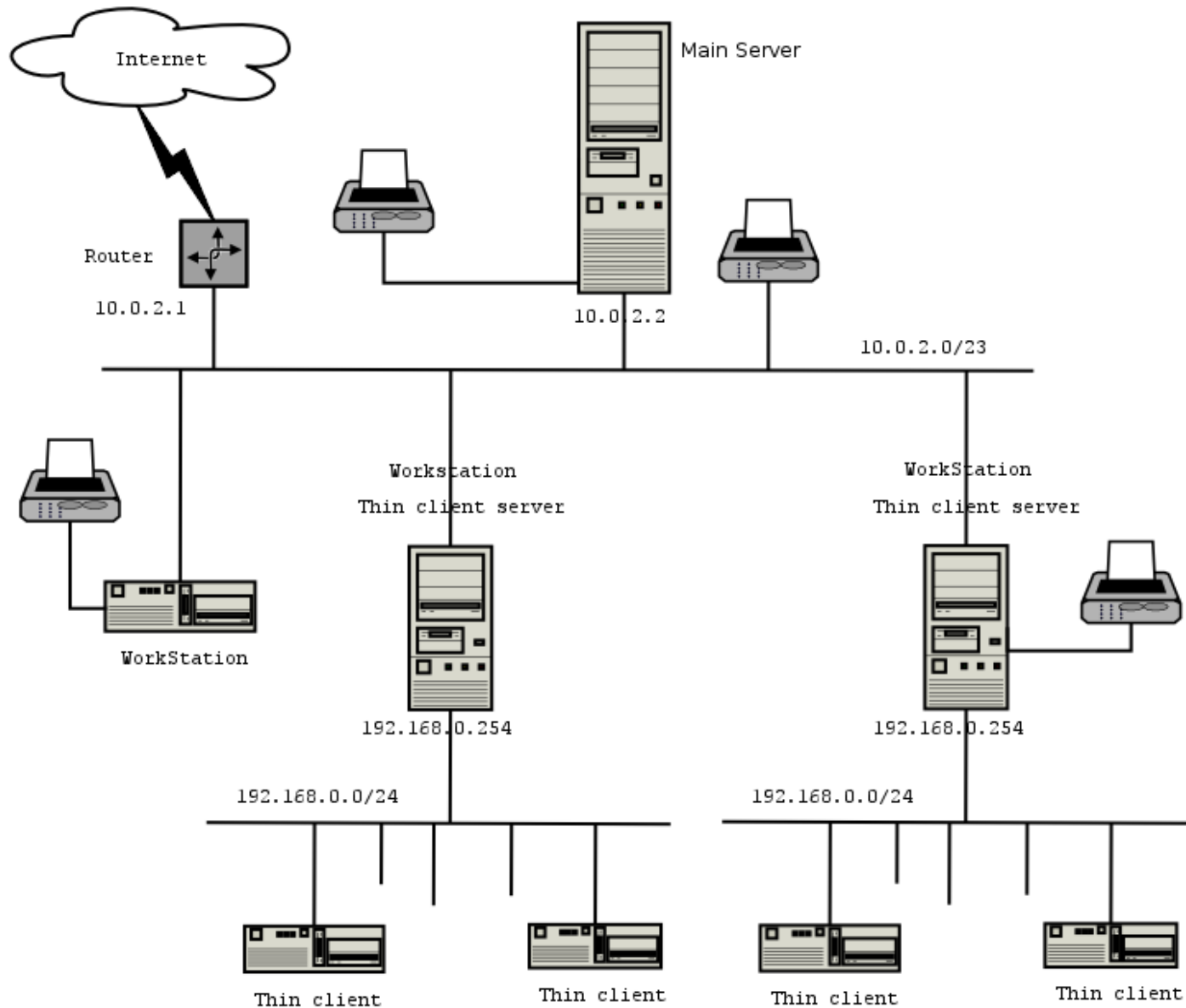


Debian Edu “terra 3.0” features

- Simplified debian-installer for i386, amd64 and powerpc
 - architecture specific installation CDs
 - multiarch DVD
- KDE based desktop with Java & flash and OpenOffice.org
 - KDE kiosk mode preconfigured
- live-CDs built with debian-live (see <http://live.debian.net>)



Network architecture



Works as designed

- LTSP server for thin-clients and diskless workstations with local device support
- Installed and preconfigured services: ldap (for users and machines), web, mail, remote syslog, munin, cups, ntp, dhcp, dns, home dirs via nfs
- Webbrowser based admintool Iwat



Works as designed

- LTSP server for thin-clients and diskless workstations with local device support - **with a predefined network setup**
- Installed services: ldap (for users and machines), web, mail, remote syslog, munin, cups, ntp, dhcp, dns, home dirs via nfs - **all working out of the box!**
- Webbrowser based admintool Iwat



Debian Edu 3.0r1 pointrelease

- 3.0r0 in July 2007, 3.0r1 in December 2007
- ~40 bugs fixed (wishlist - critical)
- ~18 packages updated after manual review from ftpmaster
- new CD/DVD images
- lots of testing



ToDo for Etch

- Etch now in bugfix mode:
 - branched packages
 - manual review
- regular debian-edu-doc updates
 - though by now I think it's better to leave it like it is and concentrate on our Lenny doc instead
- 3.0r2 not formally released
 - today only security updates and severe bugfixes



99,867% Etch

Packages not in debian-etch main

package	debian-edu/etch local	debian-edu/etch-test local
debian-edu-config	1.416+svn39964	1.416+svn39964
debian-edu-doc	0.9.20071204	1.0~20080215
debian-edu-install	0.667.1+svn39522	0.667.1+svn39522
flashplugin-nonfree		9.0.48.0.0.edu.etch1
flashplugin-nonfree-extrasound		0.0.svn2431-2.0.edu.etch.3
live-helper	1.0a19-1.0.edu.etch.1	1.0a36-1.0.edu.etch.1
live-initramfs	1.91.5-1.0.edu.etch.1	1.110.6-1
localization-config	1.02	1.02
ltsdfs	0.4.3+debian2+0.edu.0.etch.1	0.4.3+debian2+0.edu.0.etch.1
lwat	0.16-1	0.17-1
slbackup-php	0.3-1.edu.etch.1	0.3-1.edu.etch.1



99,867% Etch

Packages newer in debian-edu/etch than in debian/etch

package	debian-edu/etch local	debian/etch main
915resolution	0.5.3-0.0.edu.etch.1	0.5.2-9
console-tools	1:0.2.3dbs-65.0.0.edu.etch.3	1:0.2.3dbs-65
cpufrequtils	002-4.0.edu.etch.1	002-2
dbus	1.0.2-1.0.edu.etch.1	1.0.2-1
debian-edu	0.822.0.edu.etch.3	0.813
debian-edu-archive-keyring	2007.09.15	2006.09.17
debian-edu-artwork	0.0.23.0.edu.etch.1	0.0.17
discover	2.1.2-1.0.edu.etch.1	2.1.1-2.1
discover-data	2.2007.08.07-0.1.edu.etch.1	2.2007.02.02
hal	0.5.8.1-9.0.edu.etch.3	0.5.8.1-9
kde-i18n	4:3.5.5-1.0.edu.etch.3	4:3.5.5-1
libpam-foreground	0.4-0.0.edu.etch.1	0.2
ltspp	0.99debian12+0.0.edu.etch.8	0.99debian11
munin	1.2.5-2.0.edu.etch.4	1.2.5-1
sitesummary	0.0.35	0.0.22
xdebconfigurator	1.30.edu.etch.1	1.28



Why be 100% part of Debian?

- less work
- better results



Why be 100% part of Debian?

- less work
- better results
- much better results! (reuse of knowledge & docs, etc)
- make one part of the many that form an universal operating system
- personally, I also see Debian Edu as a testbed for changes in Debian, e.g. for making the default desktop “sexier”



Debian Edu and Debian

- official Debian sub-project (and another Debian (Pure) Blend)
- more than 30 developer gatherings in Norway, Germany, Spain, Brazil, France – good to improve cooperation and to avoid flamewars
- approx. 30 Debian Edu developers, more than 150 translators and documentation writers
- >1000 debian developers :-)
- in Etch: 9 packages which are currently not in Debian, 16 packages which are modified in Edu
 - Lenny: 13 packages differ from Debian



Contributions to Debian

- skilled and active developers :)
- participation in the CDD effort
- funded kickoff of debian-installer
- preseeding for d-i
- funded kickoff of testing-security
- LTSP
- support the free java and gnash efforts



Development model

- All code, translations and documentation have to be committed to our source code management system(s)
- Bugs have to be committed to the bug-tracking system(s)
- Commit everything upstream
- Follow the licence-terms, encourage GPL
- Help people to help themselves
- The person who does something decides



Development tools

- debian-edu@lists.debian.org
 - many more lists for support, read the manual
- wiki.debian.org/DebianEdu
- #debian-edu, monthly meetings
- frequent RL gatherings
- svn.debian.org/debian-edu on Alioth



Our own archive and cd-builds

- ftp.skolelinux.no
 - sarge, etch, etch-test, lenny, lenny-test
 - etch-test and lenny-test are autobuild
 - manual move from -test to etch/lenny
 - etch and sarge are untouchable now
- we give upload rights to non-DDs – within our policies
- svn-commit triggered builds of etch, etch-test, lenny and lenny-test CDs and DVDs



Challenges related to the Lenny release

- Integration of the LinEx customisations: LinEx plans to deploy a new version based on Debian Edu in spring/summer 2008
- release with Debian Lenny (end of 2008)
- after that *maybe* do pointreleases out of sync with Debian - needs to be discussed/seen
- our Etch was 3.0, Debians was 4.0 ...



Challenges related to the Lenny release

- Integration of the LinEx customisations: LinEx plans to deploy a new version based on Debian Edu in spring/summer 2008
- We failed to release with Debian Lenny (it's now 7 months later...)
- Debian Lenny 5.0.3 and still no Debian Edu Lenny 5.0.3+edu0 released :-)



Technical challenges

- LDAPify services (DNS, DHCP, Samba)
 - For web-based admin tool(s)
 - make it easier to change the IP addresses
- configuration in a policy compliant way (#311188, failed)
- properly support laptops as workstations
 - Failed atm, but technically quite easy...
- the same desktop “experience” with gnome as with KDE, better menu system



new Features in Lenny

- Gnome desktop, Sugar desktop
- dns + dhcp3 configs in LDAP, automated PXE setup, somewhat less hardcoded IP set up
- some work on #311188
- Free flash (?) & free Java
- everything else which is new in Lenny
- everything else which we had in Edu Etch



Current diff to Lenny

Packages in our archive compared to the Debian archive

Packages newer in debian-edu/lenny-test than in debian/lenny

package	debian-edu/lenny-test local	debian/lenny main
debian-edu	0.838~svn58953	0.837
debian-edu-artwork	0.0.30-2	0.0.28
debian-edu-config	1.427~svn58966	1.423
debian-edu-doc	1.3~20090918~5.0.3+edu0~alpha	1.2~20080715
debian-edu-install	0.678~svn0	0.674
hal	0.5.11-8.0.edu.lenny.1	0.5.11-8
localization-config	1.06~svn55808	1.05
lwat	0.18~beta-2	0.17-4
sitesummary	0.0.49	0.0.47

Packages not in debian-lenny main

package	debian-edu/lenny local	debian-edu/lenny-test local
dak	0edu2	0edu2
edu-ltsp-client-builder	5.1.69-1~edu.lenny+3	5.1.69-1~edu.lenny+5
host-policygroups	0.0.1~svn45004	0.0.1~svn45004
ltsp-docs		0.99+bzr91-1



Current diff to Lenny

- Source packages in Debian lenny main: 12121
- Source packages in Debian Edu lenny local: 11, number of identical packages in percent: 99.91%
- Source packages in Debian Edu lenny-test local: 13, number of identical packages in percent: 99.89%



Current diff to Lenny

- Upgrades are not officially supported (though we try our best to at least document problems in the manual for now)
 - In practice upgrades work and are done
- <http://wiki.debian.org/DebianEdu/Bug311188>
- This bug was filed as RC in 2005 and downgraded to important in February 2008
 - We don't violate policy (by the word)
 - We want our packages to migrate to testing



#311188 blockers

- 370324: Make /etc/courier/authdaemonrc automatically configurable
- 370332: keep server list separate from other ntp.conf settings
- 370337: Please remove bogus change of /etc/default/slapd
- 370343: Make /etc/ldap/ldap.conf automatically configurable
- 370339: syslogd: Make some conffiles automatically configurable



#311188 blockers

- 370342: Make `/etc/kde3/kdm/Xaccess` automatically configurable
- 370346: Make `/etc/security/group.conf` automatically configurable
- 370348: Make `/etc/skel/.bash_profile` automatically configurable
- 370351: Make `/etc/sysctl.conf` automatically configurable



#311188 conclusions

- maintainers, please use something like `/etc/apache2/conf.d/` or use hidden debconf questions (when sensible)



How YOU can help

- Join the mailinglist debian-edu@lists.debian.org and [#debian-edu](https://irc.debian.org) on irc.debian.org (both optional)
- Testing new installations from lenny(-test)
- Reporting bugs and following up on them (=testing again)
- Fixing bugs :-)
- Writing documentation (look for FIXME)
- Translating documentation
- Did I mention testing and bug reporting?! :-)



Testing / Bug reporting

- wiki.debian.org/debian-edu/Status/Lenny
 - Explains how to test
 - Lists known issues (and possible workarounds)
 - Links to bug tracker and explains how to report bugs



Testing / Bug reporting

- wiki.debian.org/debian-edu/Status/Lenny
 - Explains how to test
 - Lists known issues (and possible workarounds)
 - Links to bug tracker and explains how to report bugs
 - reporting bugs is *good!*
 - testing if bugs are still present or already fixed is also very *good!*



Write the fine manual!

- Complete end-user documentation
 - developed in a wiki
 - review of commit mails, sometimes editorial changes
 - translated with .po files
 - translated to Bokmål, Italian, German, Spanish and French
 - generates html and pdf versions
 - available through the debian-edu-doc package
 - uploaded monthly (since October 2007)



Write the fine manual!

- Who of you is able to speak/write (bad) english?



Write the fine manual!

- Who of you is able to speak/write (bad) english?
 - content is more important than grammar!



Write the fine manual!

- Who of you is able to speak/write (bad) english?
 - content is more important than grammar!
- Who of you ever edited a wiki page?



Write the fine manual!

- Who of you is able to speak/write (bad) english?
 - content is more important than grammar!
- Who of you ever edited a wiki page?

=> You qualify for writing the fine manual!!!



Translate the fine manual!

- Who of you is able to understand written english?



Translate the fine manual!

- Who of you is able to understand written english?
- Who of you every translated software using .po files?



Translate the fine manual!

- Who of you is able to understand written english?
- Who of you every translated software using .po files?

=> You qualify for translating the fine manual! :-)

BTW: Wanted: a good intro how to edit .po files with kbabel or poedit... hints welcome.



WWWWebseite

- www.skolelinux.org
 - outdated & ugly
 - hardly translated
- Neue Beta-Webseite:
 - joomla.slx.no
 - new team formed, welcomes new members
 - almost finished
 - still needs a bit polishing
 - and translations



Thank you for your attention!

Questions ? Suggestions ? Anything else ?

- Want to contribute? We're always in need of developers, testers, translators, documentation writers, artists, multipliers!
 - Please contact me. I'm happy to help you to get started!
- Slides available at layer-acht.org/talks

